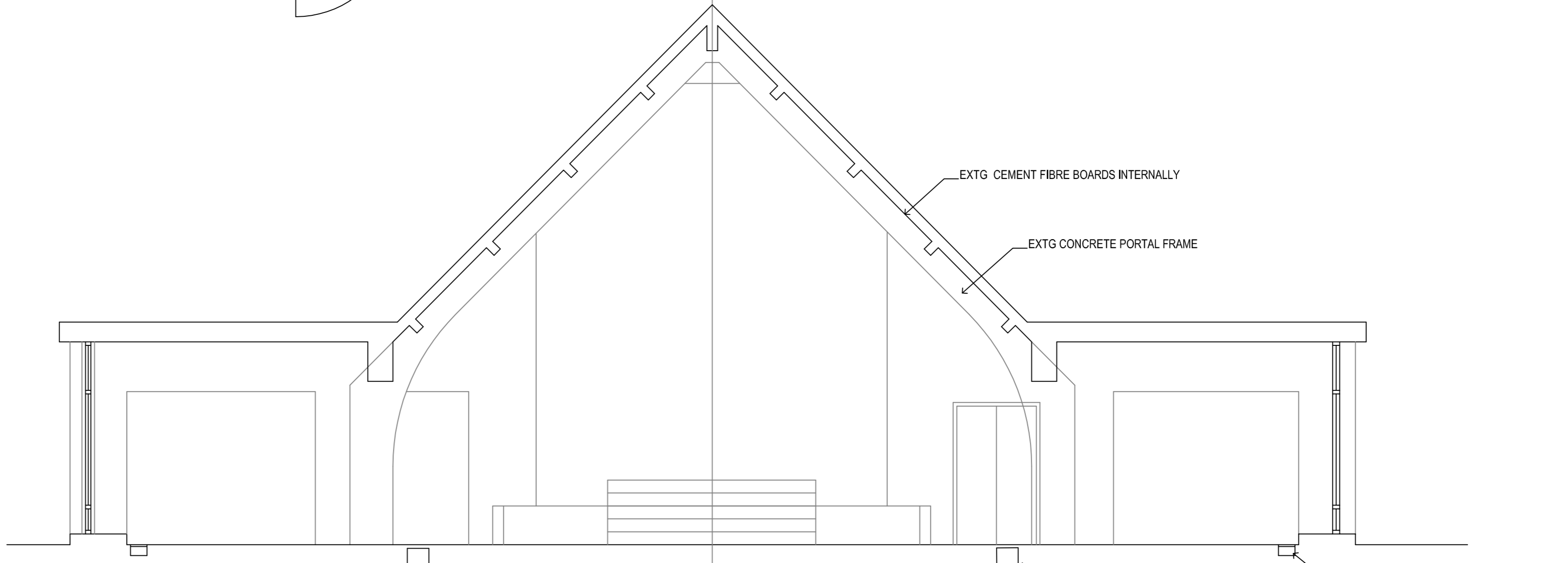


GROUND PLAN

HEATING PLAN
SCALE 1:50

- KEY**
- NEW FLOW + RETURN PIPEWORK
 - EXTG FLOW + RETURN PIPEWORK
 - NEW RADIATOR SIZED TO SUIT
 - STELRAD VERTEX + ELITE K2 RANGE OR EQUIVALENT
 - STELRAD VERTEX + ELITE K2 RANGE OR EQUIVALENT
 - 3 PORT MOTORISED CONTROL VALVE
 - ROOM THERMOSTAT
 - 13A DOUBLE POWER SOCKET
 - FAN ISOLATOR (HIGH LEVEL)
 - GAS METER
 - ELECTRICITY METER



SECTION ON A-A

EXTG HEATING PIPE ACCESS DUCT TO BE RE-PIPED + INSULATED

EXTG CEMENT FIBRE BOARDS INTERNALLY

EXTG CONCRETE PORTAL FRAME

NEW INSULATED FLOW + RETURN PIPES MAKE GOOD ALL FLOOR TILING TO SUIT

REPLACE EXTG TRENCH HEATING PIPEWORK AND REFURBISH HEATING DUCTS + GRILLES

VOLUMES
TOTAL VOLUME OF CHURCH : 1,311.75 m³
VOLUME OF SOUTH AISLE: 140.75m³
VOLUME OF NORTH AISLE: 192.25m³
VOLUME OF CHANCEL: 94.95m³

CLIENT ST RICHARDS CHURCH
LANGNEY, EASTBOURNE

PROJECT NEW HEATING SYSTEM

TITLE GF PLAN + SECTION A-A

SCALE 1:50

DATE 12/06/18

DRAWN BJP

NUMBER 212C/01H

REVISION
ALL DIMS TO BE CHECKED ON SITE PRIOR TO FABRICATION + INSTALLATION

A 12/06/18 RADS ADDED WITH NOTES

B 19/07/18 RADS 25 & 26 ADDED

C 06/12/18 FLOOR DUCT DETAILS ADDED

D 07/01/19 RAD R23 MOVED TO EAST WALL
RAD R18 MOVED TO N. AISLE WALL

E 10/01/19 RADS RENUMBERED
EXTG F-R PIPES AMENDED
FORMER RAD R11 OMITTED TO COLUM

F 14/01/19 HEDLEY VISICK REVISIONS
RADS R14 + R17 MOVED & RESIZED
FURTHER BOILER ADDED
NOTES ADDED & AMENDED
SEE REVISION CLOUDS

G 15/01/19 F-R PIPEWORK TO TRENCH HEATERS
OMITTED TO WEST END

H 08/02/19 F-R TRENCH HEATING PIPES SHOWN S AISLE + METER CUPD + AS BUILT AMENDMENTS

TYPICAL SERVICE DUCT DETAIL TO FLOOR 120

TYPICAL SERVICE DUCT DETAIL TO FLOOR WALL CONDITION 120

THIS DRAWING IS APPROXIMATE AND SHALL NOT BE REPRODUCED WITHOUT THE PERMISSION OF THE ARCHITECTS
DO NOT SCALE FROM THIS DRAWING.
USE FINISHED DIMENSIONS ONLY.